
Can home care reduce the risk of emergency readmissions of older people?

Alasdair Rutherford & Feifei Bu

1 February, 2017

University of Stirling



Research Questions

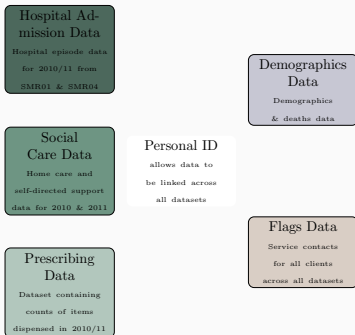
- Does *home care* ▶ play a role in reducing the risk of hospital *emergency readmission* ▶ for older people?
- Is there any difference between older people with and without dementia?

Data

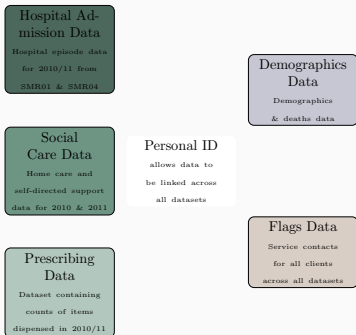
Linked Health and Social Care Data

- The Scottish Government, in collaboration with Information Services Division (ISD) Scotland, Scottish health boards and Scottish local authorities have developed a linkage of specific social care, housing support and health data in order to produce improved analytical evidence to enhance the delivery of these services
- Further information about the project can be found:
<http://www.gov.scot/Topics/Statistics/Browse/Health/DataLinking/HealthSocialCareandHousin>

Data Components



Data Components



Data linkage is available for five local authorities:

- Edinburgh
- Stirling
- Clackmannanshire
- South Ayrshire
- South Lanarkshire

- Conditional risk set model, also known as the Prentice, Williams and Perterson model (Prentice et al., 1981)

$$h_k(t, x, \beta) = h_{0k}(t) \exp(x' \beta) \quad (1)$$

- Conditional risk set model, also known as the Prentice, Williams and Perterson model (Prentice et al., 1981)

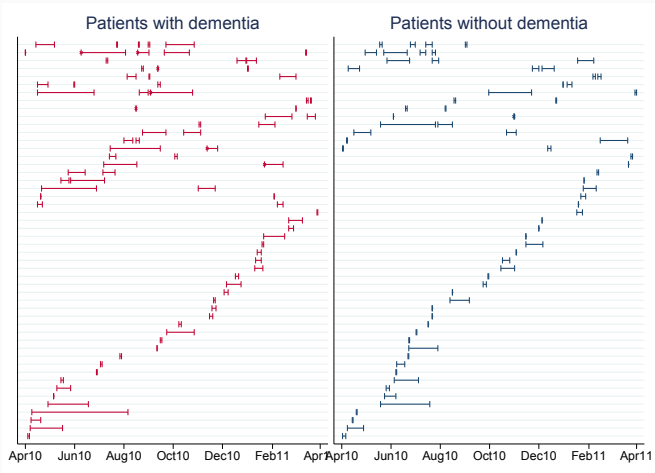
$$h_k(t, x, \beta) = h_{0k}(t) \exp(x' \beta) \quad (1)$$

- Cause-specific hazard model (competing risks)

$$h_{ik}(t, x, \beta) = h_{0ik}(t) \exp(x' \beta^t_i) \quad (2)$$

Results

Heath Care Pathway Comparison

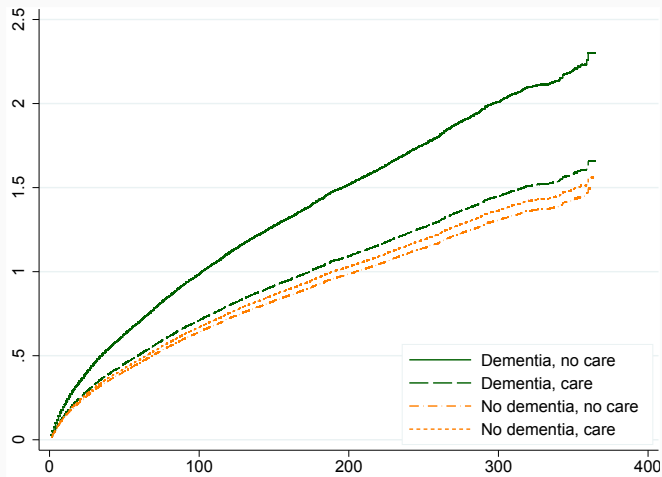


Results from Survival Analysis

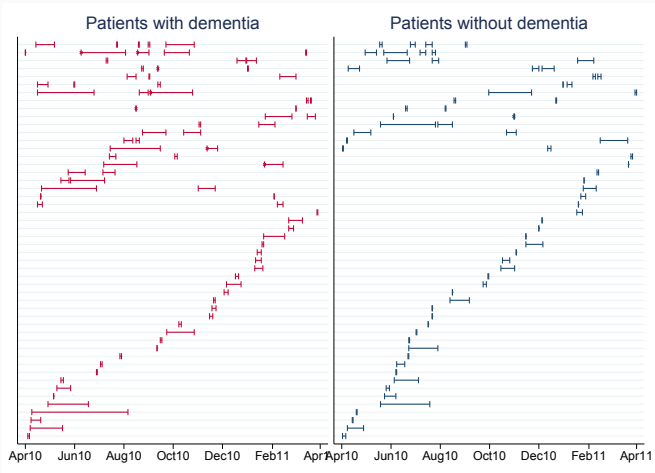
	Coef.	SE	Haz. R	95% CI	
				Lower	Upper
Dementia	0.42***	0.03	1.52	1.42	1.62
Home care	0.07	0.04	1.08	1.00	1.14
Dementia*home care	-0.37***	0.07	0.69	0.61	0.79
Live alone	0.37***	0.05	1.45	1.31	1.60
Other control variables omitted [†]	-	-	-	-	-

Notes: [†] Other control variables include: gender, age, dependent level (IoRN), health condition (CCI), deprivation level (SIMD) and local authority

Estimated Cumulative Hazard Functions: I



Heath Care Pathway Comparison (Revisited)



Competing Risks: Injury vs. Non-injury

	Injury readmission			Non-jury readmission		
	Coef.	SE	Haz. R	Coef.	SE	Haz. R
Dementia	1.05***	(0.10)	2.86	0.40***	(0.04)	1.50
Home care	0.01	(0.12)	1.01	0.05	(0.05)	1.05
Dementia*Home care	-0.85***	(0.23)	0.43	-0.27***	(0.08)	0.76
Live alone	0.61***	(0.16)	1.84	0.46***	(0.06)	1.58
Other control variables omitted [†]	-	-	-	-	-	-

[†] Other control variables include: gender, age, dependent level (IoRN), health condition (CCI), deprivation level (SIMD) and local authority

Conclusion

To Conclude

- We find no evidence that home care reduces the rate of hospital emergency readmission for older people without dementia

To Conclude

- We find no evidence that home care reduces the rate of hospital emergency readmission for older people without dementia
- However, home care significantly reduces the rate of hospital emergency readmission for dementia patients

To Conclude

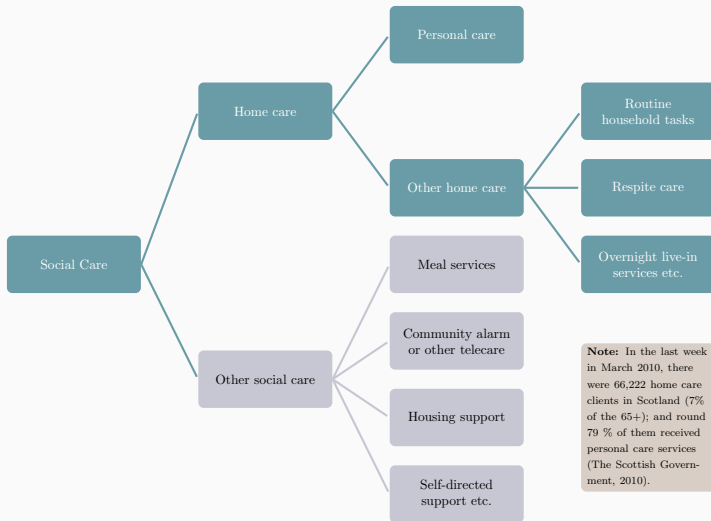
- We find no evidence that home care reduces the rate of hospital emergency readmission for older people without dementia
- However, home care significantly reduces the rate of hospital emergency readmission for dementia patients
- Without home care, dementia patients are at a significantly higher rate of emergency readmission, injury-related or not

To Conclude

- We find no evidence that home care reduces the rate of hospital emergency readmission for older people without dementia
- However, home care significantly reduces the rate of hospital emergency readmission for dementia patients
- Without home care, dementia patients are at a significantly higher rate of emergency readmission, injury-related or not
- For dementia patients, home care reduces the rate of both injury and non-injury readmission, but the effect appears to be stronger for injury-related readmissions

Thank you!

More



Note: In the last week in March 2010, there were 66,222 home care clients in Scotland (7% of the 65+); and round 79 % of them received personal care services (The Scottish Government, 2010).

Back ▶

- The number of emergency patients is around 2.5 times higher than the number of elective patients (ISD Scotland, 2015)
- From 2005 to 2015, the emergency admission rate has increased by 18% in Scotland ▶

